

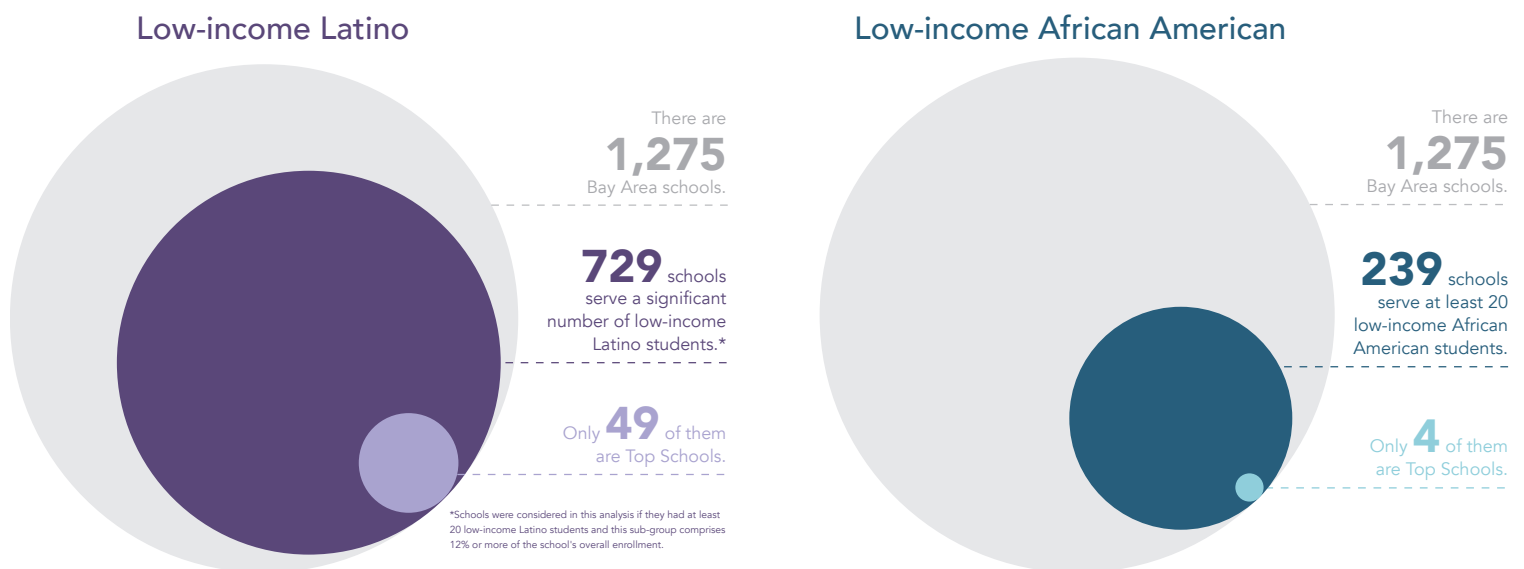
Top Bay Area Public Schools for Underserved Students



Each year, Innovate Public Schools celebrates the Bay Area public schools achieving excellent results for low-income Latino and low-income African American students.[†] Our annual report examines 2016-17 results in both English and math to identify schools where students from these groups have higher proficiency rates than all students combined in the state. These schools are making significant strides toward closing achievement gaps. Few Bay Area schools have achieved this. Right now, only one out of 20 low-income Latino and African American students in the Bay Area attend a school achieving these results.

That must change.

Few schools in the Bay Area are closing the gap for low-income African American and Latino students.



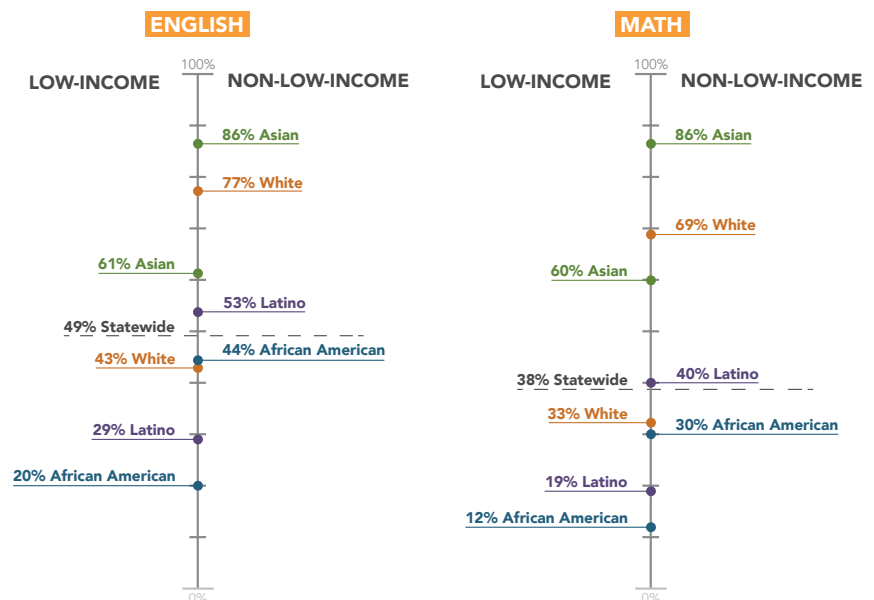
These top schools are bucking the trend across the Bay Area

For decades, achievement gaps between low-income Latino and African American students and other students have remained large. Poverty alone does not cause these gaps. Unfortunately, in the Bay Area, public schools have not been the equalizing force they should be.

Though we're far from delivering on the promise of an excellent education for all students, this list highlights the schools that are leading the way.

Visualizing the achievement gap

Percentage of Bay Area students meeting standards, 2016-17



Source: California Department of Education, 2016-17 California Assessment of Student Performance and Progress
[†]Bay Area is defined as Alameda, Contra Costa, Santa Clara, San Francisco, and San Mateo counties.

Low-income Latino Students Proficient in Math

NAME OF SCHOOL	% PROFICIENT IN MATH	CHANGE IN % PROFICIENT FROM LAST YEAR	DISTRICT / AUTHORIZER	CHARTER NETWORK	% LOW-INCOME LATINO IN SCHOOL
ELEMENTARY SCHOOL					
Gilroy Prep (Charter)	66%	↑ 6	Gilroy Unified	Navigator Public Schools	49%
The Mission Preparatory School (Charter)	64%	0	San Francisco Unified		73%
KIPP Excelencia Community Preparatory (Charter)	59%	↓ 3	Redwood City Elementary	KIPP Bay Area Schools	83%
Rocketship Mateo Sheedy Elementary (Charter)	57%	↑ 15	Santa Clara County Office of Education	Rocketship Public Schools	81%
Rocketship Spark Academy (Charter)	57%	↑ 3	Franklin-McKinley Elementary	Rocketship Public Schools	54%
E. M. Grimmer Elementary	51%	↓ 5	Fremont Unified		49%
Rod Kelley Elementary	51%	↑ 5	Gilroy Unified		61%
Rocketship Redwood City (Charter)	49%	↑ 17	Redwood City Elementary	Rocketship Public Schools	83%
Richmond College Preparatory (Charter)	49%	↑ 5	West Contra Costa Unified		51%
Monte Gardens Elementary	47%	↑ 10	Mt. Diablo Unified		13%
Rocketship Mosaic Elementary (Charter)	47%	↓ 6	Franklin-McKinley Elementary	Rocketship Public Schools	59%
Shannon Elementary	47%	↑ 13	West Contra Costa Unified		31%
Castro Valley Elementary	45%	↑ 1	Castro Valley Unified		20%
Rocketship Alma Academy (Charter)	45%	↓ 9	Santa Clara County Office of Education	Rocketship Public Schools	71%
Rocketship Si Se Puede Academy (Charter)	44%	↓ 4	Santa Clara County Office of Education	Rocketship Public Schools	79%
Rocketship Discovery Prep (Charter)	44%	↓ 7	Santa Clara County Office of Education	Rocketship Public Schools	72%
Aspire Richmond Technology Academy (Charter)	43%	↑ 9	West Contra Costa Unified	Aspire Public Schools	70%
Reed Elementary	42%	↑ 5	San Jose Unified		14%
Rocketship Fuerza Community Prep (Charter)	42%	↑ 7	Santa Clara County Office of Education	Rocketship Public Schools	67%
Silverwood Elementary	40%	↑ 1	Mt. Diablo Unified		22%
Madison Elementary	40%	↑ 21	San Leandro Unified School District		15%

MIDDLE SCHOOL

KIPP Heartwood Academy (Charter)	59%	↑ 1	Alum Rock Union Elementary	KIPP Bay Area Schools	39%
Downtown Charter Academy (Charter)	59%	↑ 1	Oakland Unified	Amethod Public Schools Inc.	13%
KIPP Summit Academy (Charter)	48%	↓ 13	San Lorenzo Unified	KIPP Bay Area Schools	13%
Renaissance Academy	44%	0	Alum Rock Union Elementary		72%
Edison Charter Academy (Charter)	43%	↑ 7	San Francisco Unified		68%
Adelante Dual Language Academy	42%	↑ 4	Alum Rock Union Elementary		63%
Renaissance at Mathson	42%	↑ 8	Alum Rock Union Elementary		68%
Richmond Charter Academy (Charter)	39%	↓ 1	West Contra Costa Unified	Amethod Public Schools Inc.	87%

HIGH SCHOOL

Aspire Lionel Wilson College Preparatory Academy (Charter)	55%	↑ 18	Oakland Unified	Aspire Public Schools	91%
Leadership Public Schools - Hayward (Charter)	52%	↑ 15	Hayward Unified	Leadership Public Schools	61%
Gateway High (Charter)	48%	↑ 42	San Francisco Unified	Gateway Public Charter Schools	19%
Oakland Charter High (Charter)	45%	↓ 17	Oakland Unified	Amethod Public Schools Inc.	36%
KIPP San Francisco College Preparatory (Charter)	41%	↓ 10	San Francisco Unified	KIPP Bay Area Schools	50%

Low-income Latino Students Proficient in English

NAME OF SCHOOL	% PROFICIENT IN ENGLISH	CHANGE IN % PROFICIENT FROM LAST YEAR	DISTRICT / AUTHORIZER	CHARTER NETWORK	% LOW-INCOME LATINO IN SCHOOL
ELEMENTARY SCHOOL					
Gilroy Prep (Charter)	74%	↓ 3	Gilroy Unified	Navigator Public Schools	49%
The Mission Preparatory School (Charter)	71%	↓ 2	San Francisco Unified		73%
Madison Elementary	63%	↑ 26	San Leandro Unified		15%
Hammer Montessori at Galarza Elementary	59%	↑ 7	San Jose Unified		15%
Durham Elementary	52%	↑ 7	Fremont Unified		18%
Rod Kelley Elementary	52%	↑ 5	Gilroy Unified		61%
Richmond College Preparatory (Charter)	49%	↑ 5	West Contra Costa Unified		51%
Rocketship Redwood City (Charter)	47%	↑ 16	Redwood City Elementary	Rocketship Public Schools	83%
Southgate Elementary	47%	↑ 7	Hayward Unified		29%
Ayers Elementary	47%	↑ 8	Mt. Diablo Unified		16%
Voices College-Bound Language Academy (Charter)	47%	↓ 1	Franklin-McKinley Elementary	Voices College-Bound Language Academies	68%
MIDDLE SCHOOL					
KIPP Summit Academy (Charter)	59%	↓ 17	San Lorenzo Unified	KIPP Bay Area Schools	13%
KIPP Heartwood Academy (Charter)	57%	↓ 1	Alum Rock Union Elementary	KIPP Bay Area Schools	39%
Voices College-Bound Language Academy (Charter)	56%	↓ 17	Franklin-McKinley Elementary	Voices College-Bound Language Academies	68%
Summit Public School K2 (Charter)	56%	↓ 1	Contra Costa County Office of Education	Summit Public Schools	21%
Downtown Charter Academy (Charter)	55%	↑ 13	Oakland Unified	Amethod Public Schools Inc.	13%
Renaissance Academy	54%	↓ 3	Alum Rock Union Elementary		72%
KIPP Heritage Academy (Charter)	53%	↓ 1	Franklin-McKinley Elementary	KIPP Bay Area Schools	19%
River Glen	52%	↓ 7	San Jose Unified		42%
Renaissance at Mathson	52%	↑ 2	Alum Rock Union Elementary		68%
KIPP Prize Preparatory Academy (Charter)	50%	↑ 1	Alum Rock Union Elementary	KIPP Bay Area Schools	41%
HIGH SCHOOL					
Summit Preparatory Charter High (Charter)	83%	0	Sequoia Union High	Summit Public Schools	41%
KIPP San Francisco College Preparatory (Charter)	80%	↑ 3	San Francisco Unified	KIPP Bay Area Schools	50%
Leadership Public Schools - Hayward (Charter)	79%	↓ 1	Hayward Unified	Leadership Public Schools	61%
Leadership Public Schools - Richmond (Charter)	73%	↓ 3	West Contra Costa Unified	Leadership Public Schools	82%
Aspire Lionel Wilson College Preparatory Academy (Charter)	71%	↑ 13	Oakland Unified	Aspire Public Schools	91%
Dozier-Libbey Medical High	70%	↓ 12	Antioch Unified		26%
ARISE High (Charter)	69%	↑ 17	Oakland Unified		84%
Everest Public High (Charter)	68%	↓ 14	Sequoia Union High	Summit Public Schools	56%
Oakland Charter High (Charter)	68%	↓ 17	Oakland Unified	Amethod Public Schools Inc.	36%
Gateway High (Charter)	65%	↑ 21	San Francisco Unified	Gateway Public Charter Schools	19%
Del Mar High	65%	↑ 14	Campbell Union High		46%

Low-income African American Students Proficient in Math

NAME OF SCHOOL	% PROFICIENT IN MATH	CHANGE IN % PROFICIENT FROM LAST YEAR	DISTRICT / AUTHORIZER	CHARTER NETWORK	% LOW-INCOME AFRICAN AMERICAN IN SCHOOL
ELEMENTARY SCHOOL					
John Muir Elementary	43%	↑ 30	San Francisco Unified		25%
MIDDLE SCHOOL					
American Indian Public Charter II (Charter)	59%	↑ 2	Oakland Unified	American Indian Model Schools	14%
American Indian Public Charter I (Charter)	54%	↑ 15	Oakland Unified	American Indian Model Schools	18%

Low-income African American Students Proficient in English

NAME OF SCHOOL	% PROFICIENT IN ENGLISH	CHANGE IN % PROFICIENT FROM LAST YEAR	DISTRICT / AUTHORIZER	CHARTER NETWORK	% LOW-INCOME AFRICAN AMERICAN IN SCHOOL
ELEMENTARY SCHOOL					
Rocketship Mateo Sheedy Elementary (Charter)	76%	↑ 24	Santa Clara County Office of Education	Rocketship Public Schools	7%
MIDDLE SCHOOL					
American Indian Public Charter II (Charter)	53%	↑ 24	Oakland Unified	American Indian Model Schools	14%

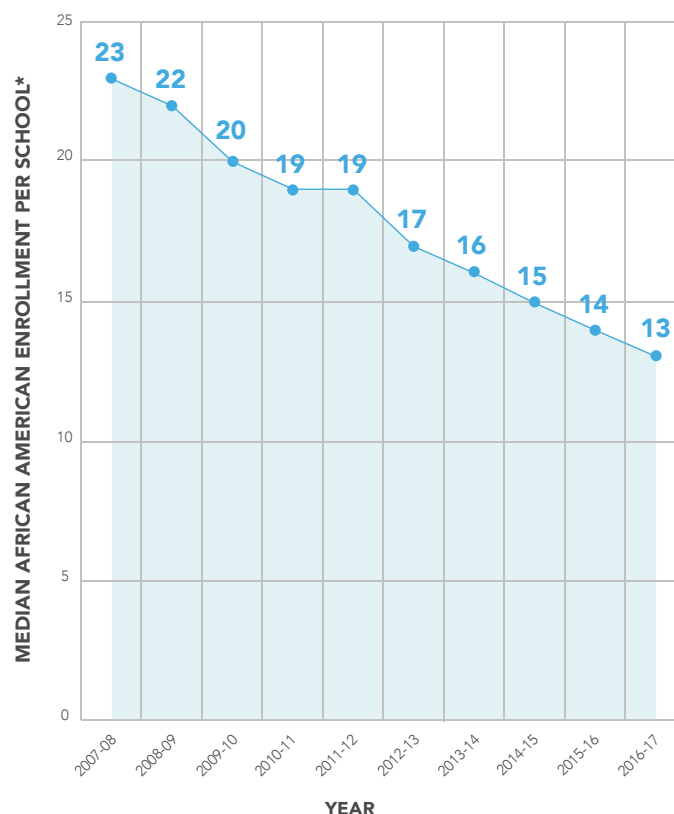
Bay Area schools are failing African American students, in particular

This year, only four schools qualified as top schools for low-income African American students. These small numbers reflect both the small size of the African American community in the Bay and the fact that few schools are delivering strong results for low-income African American students.

In the last several years, the housing crisis has pushed more and more low-income families out of this region—exacerbating the decline in low-income African American enrollment. This makes it more challenging to report how local schools are doing for these students. At least 20 students in a particular subgroup are needed to reliably report a school's performance. In the 2016-17 school year, over 80% of Bay Area schools did not serve enough low-income African American students to have reliable test data. In fact, half of schools enroll fewer than 13 African American students. That has significantly dropped from just 10 years ago, when half of Bay Area schools served fewer than 23 African American students.

Though few schools have reliable test data to report their low-income African American student results, even fewer are ensuring this subgroup is achieving the standards. Of the 239 schools in the Bay Area that have reliable test data for low-income African American students, 98% still failed to close the achievement gap. We believe we can and must do better.

African American enrollment in Bay Area schools is declining



*The median was calculated for African American enrollment across all five counties in the Bay Area. In this sample, Bay Area is defined as Alameda, Contra Costa, Santa Clara, San Francisco, and San Mateo counties. Unlike with the Top Schools list methodology (that use the CAASPP enrollment file), these are total enrollment numbers that come from the CDE enrollment data file.